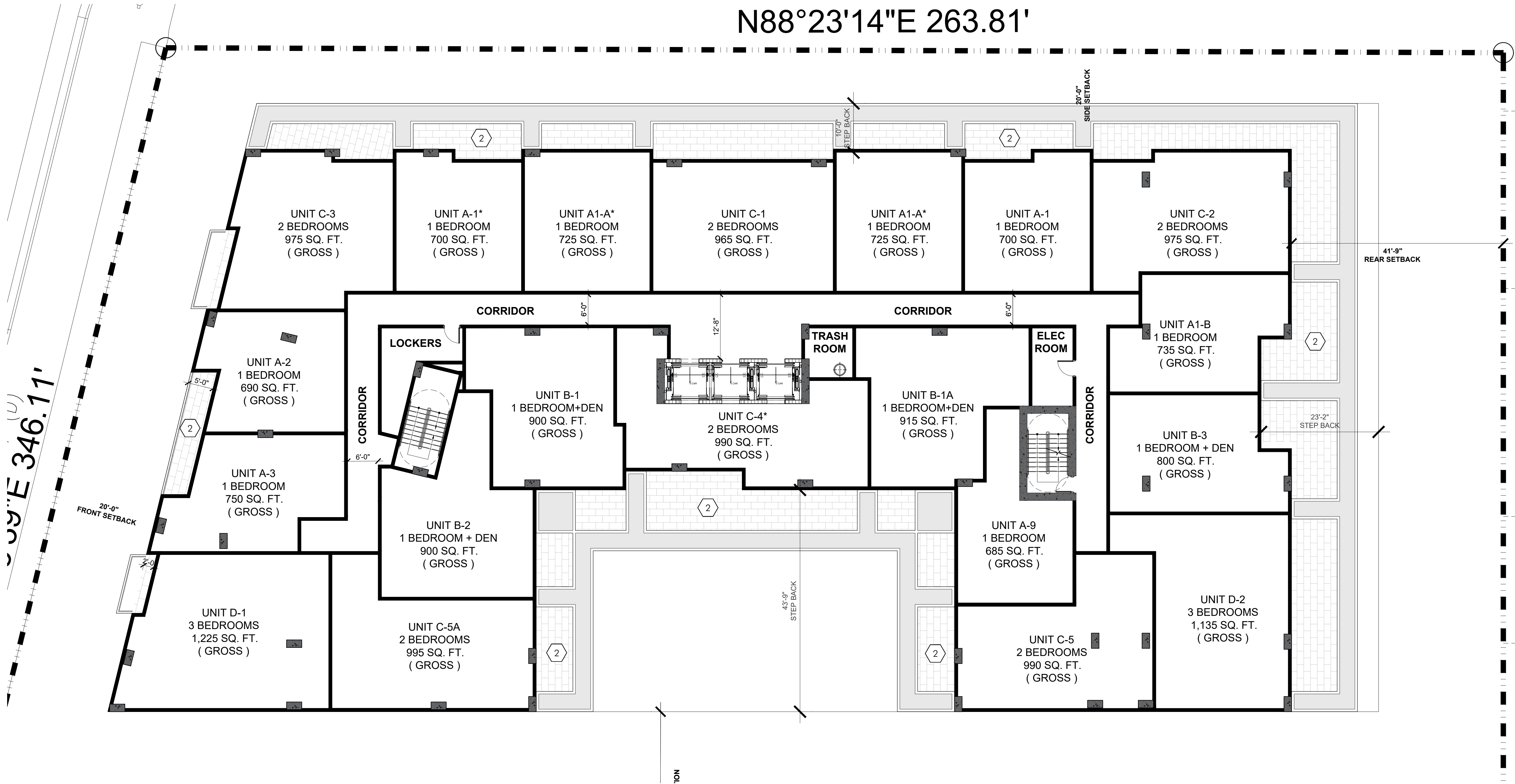


N88°23'14"E 263.81'

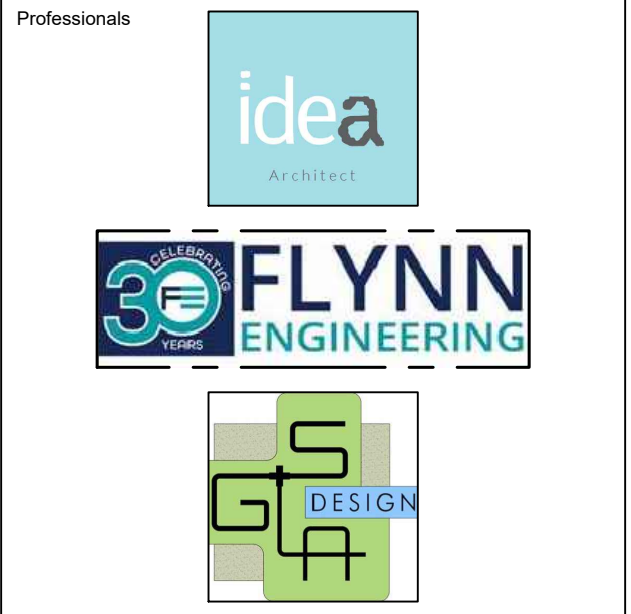


HARDSCAPE SCHEDULE					
MATERIALS					
KEY	DESCRIPTION	MANUFACTURER	COLOR	FINISH	SIZE
1	Concrete	Contractor	Grey	Standard	See civil
2	Concrete Paver	TBD	TBD	TBD	TBD



absolute-idea.com
CANAL PARK
3323 NE 163rd Street, Suite 200 North Miami Beach, FL 33160
305.792.0015 305.931.0279 info@absolute-idea.com

SEAL
KEN GARDNER
FLA 1589
TO THE BEST OF MY KNOWLEDGE, THE PLANS AND SPECIFICATIONS COMPLY WITH THE APPLICABLE MINIMUM BUILDING CODES AND THE APPLICABLE PROFESSIONAL STANDARDS AND REQUIREMENTS OF THE BOARD OF PROFESSIONAL ENGINEERS WITH THE EXCEPTION OF ANY NOTES TO THE CONTRARY.



REV.	DATE	DESCRIPTION
01	XX-XX-2024	D.R.C SUBMITAL

ALL MEASUREMENTS MUST BE VERIFIED BEFORE BEGINNING THE WORKS. NO MEASUREMENTS ARE TO BE SCALED DIRECTLY FROM THIS DRAWING.

Key section

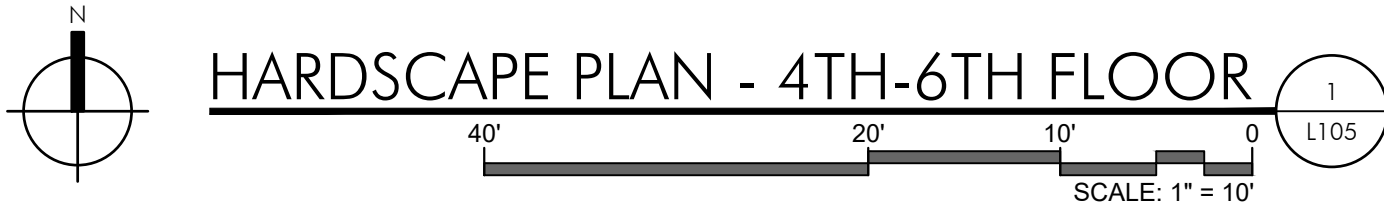
Client
VERA FUND
NICK POLYUSHKIN
& YURI KHARITONENKOV
TEL: 305.833.3303

Project
**1600 S FEDERAL HIGHWAY
(MIXED-USE PROJECT)**
1600 SOUTH FEDERAL HIGHWAY,
POMPANO BEACH, FL 33062

Title HARDSCAPE PLAN 4TH - 6TH FLOOR			
Drawn GSLA	Field LANDSCAPE ARCH	Project Manager KG	Dwg. no. L-105
Verified KG	Scale as shown	Project 24-838	
Approved KG	Date 10-09-2024		

AAC

PZ24-12000027
06/02/2026



HARDSCAPE PLAN - 4TH-6TH FLOOR